

Figure E-3 The distribution of CSRI values and domain scores (Risk, Governance, Society, Built Environmental, and Natural Environmental)

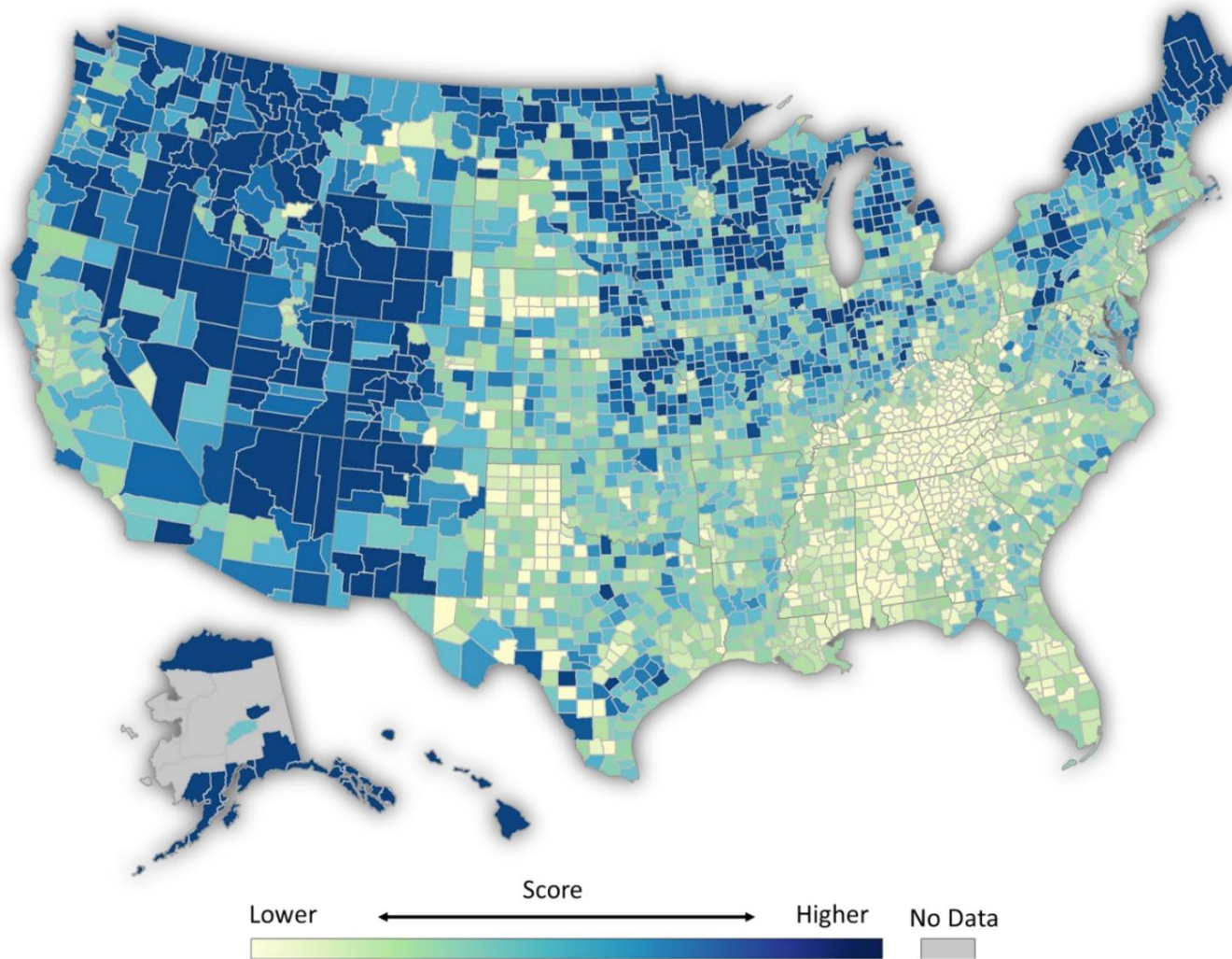


Figure E-2. Map showing distribution of final CRSI Scores across the U.S. (2000-2015). Darker colors indicate higher resilience scores; lighter colors indicate lower resilience scores.

Region 1

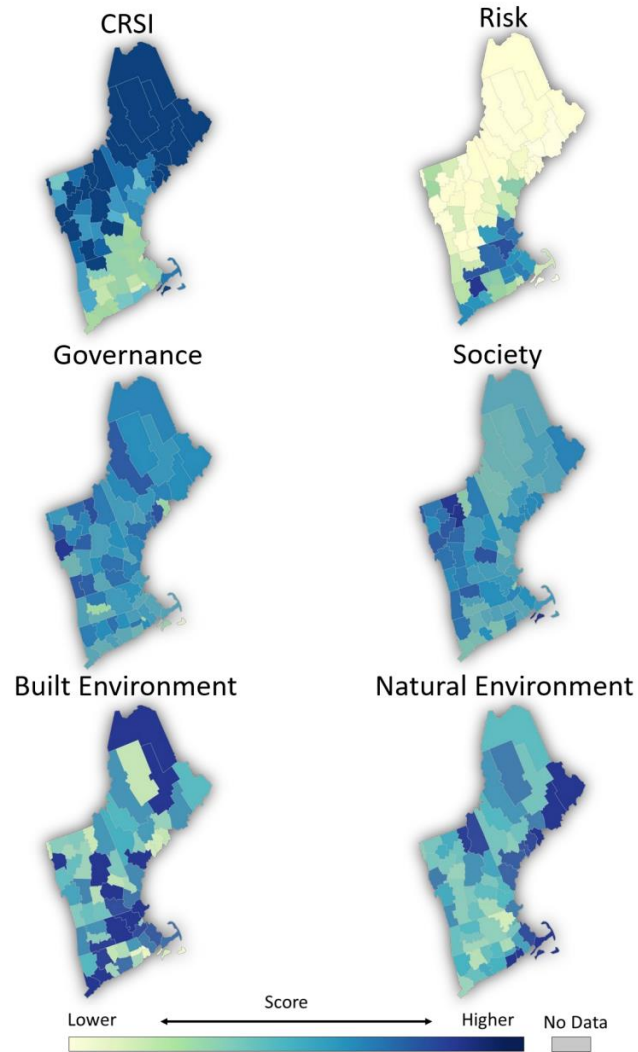


Figure 4.16 The distributions of EPA Region 1 CRSI values and domain scores (Risk, Governance, Society, Built Environment and Natural Environment).

Federal Govt
builds dams & levees

+ States ask local
governments to plan

+ Property owners resist regulations,
courts often favorable

+ If a disaster strikes,
insurance restores, disaster aid assists

+ If you don't have insurance, leave!

+ Fiscal reliance on property taxes

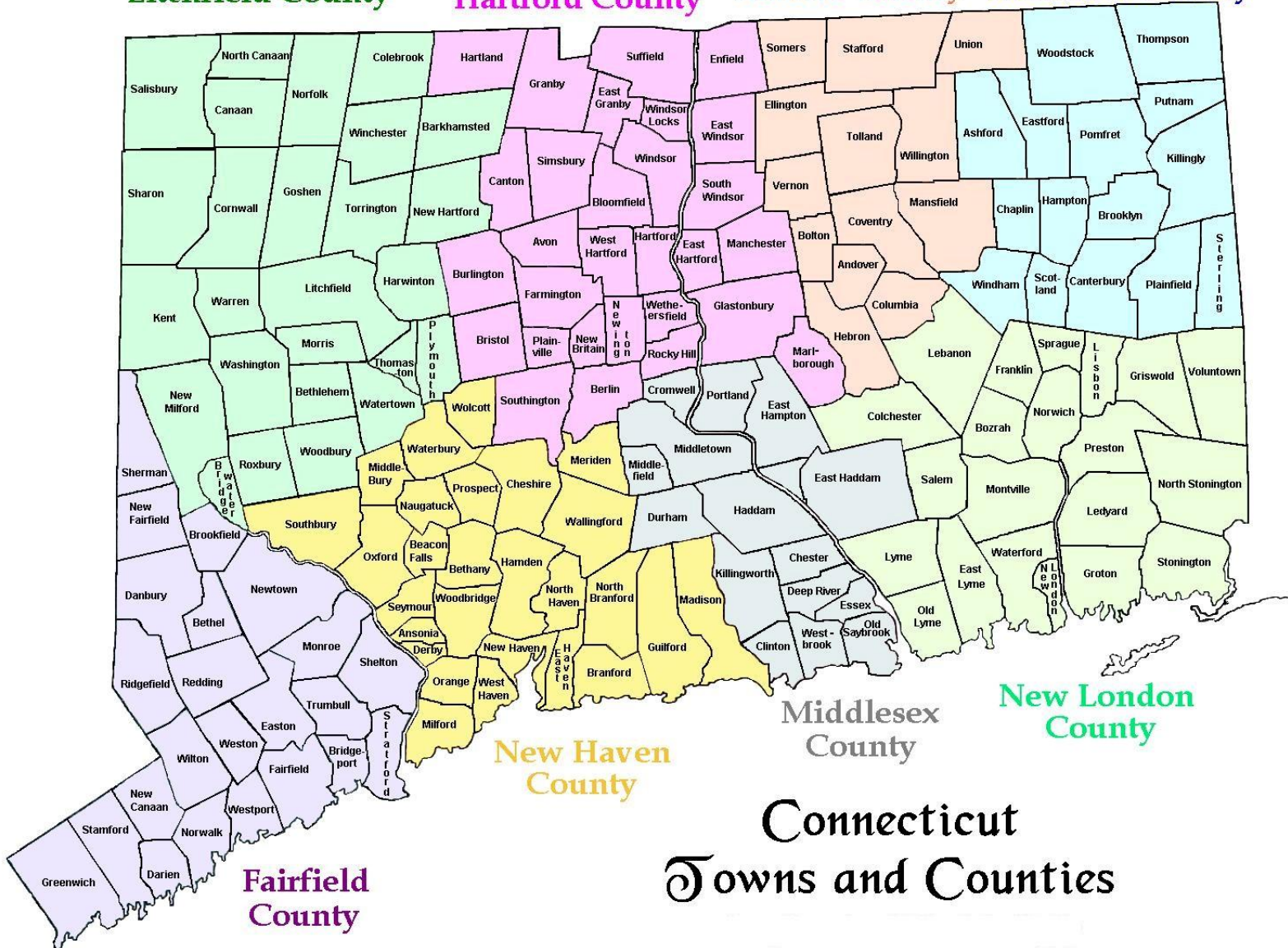
Little relationship between hazards and land use

Litchfield County

Hartford County

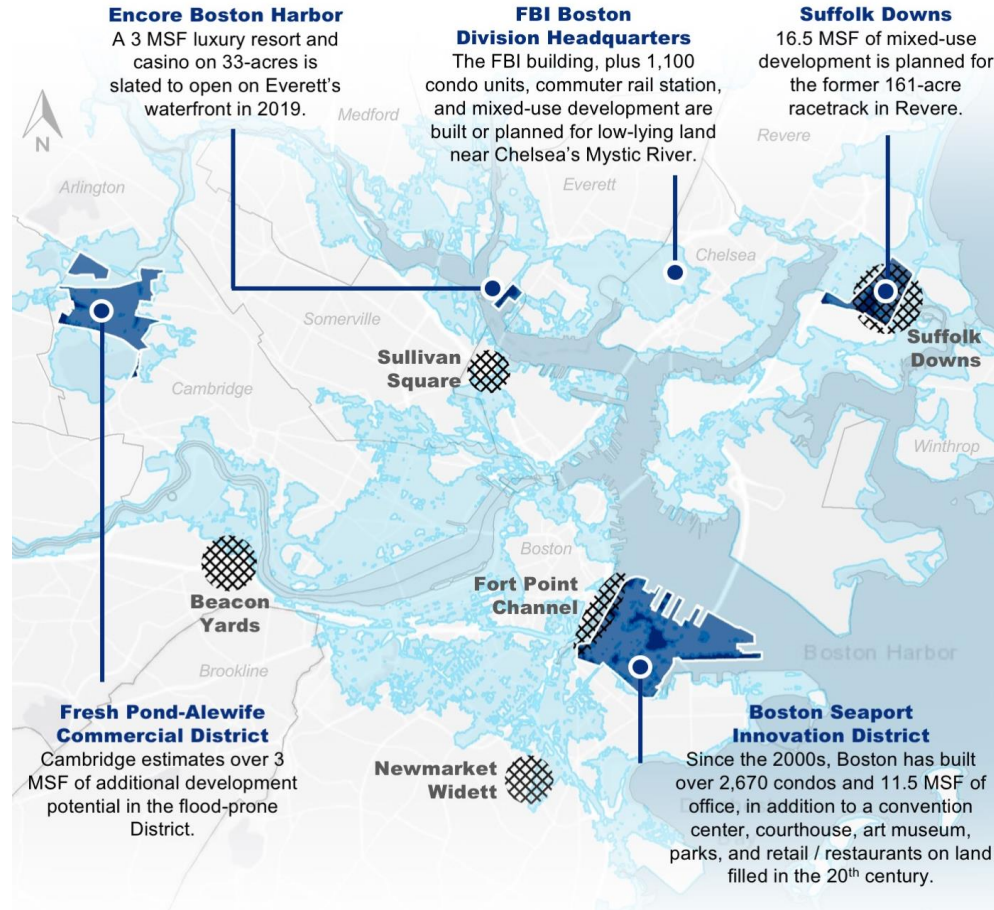
Tolland County

Windham County



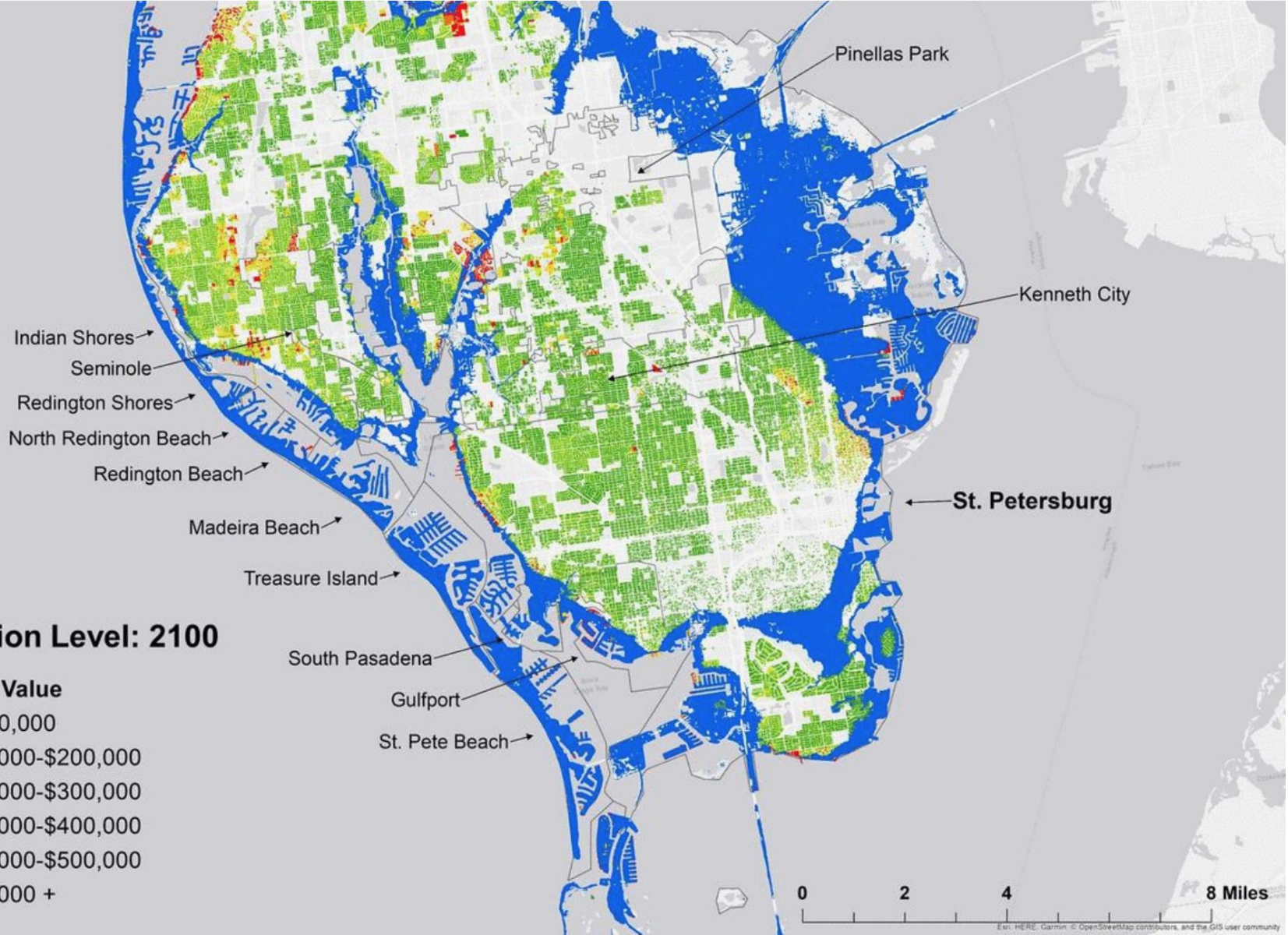
Connecticut
Towns and Counties

6 feet of
sea level rise



Shi, L., & Varuzzo, A. M. (2020). Surging seas, rising fiscal stress: Exploring municipal fiscal vulnerability to climate change. *Cities*, 100, 102658. <https://doi.org/10.1016/j.cities.2020.102658>



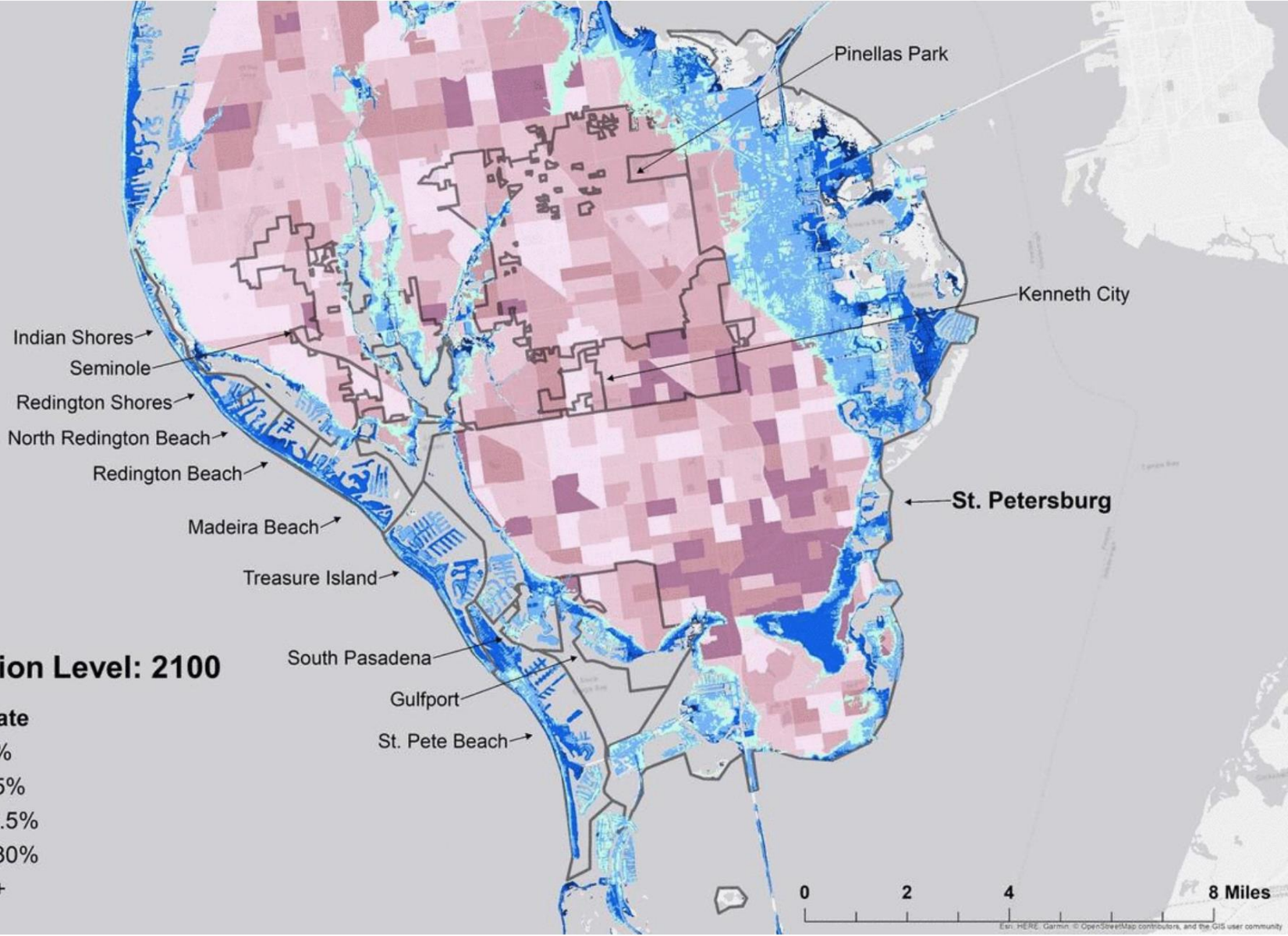


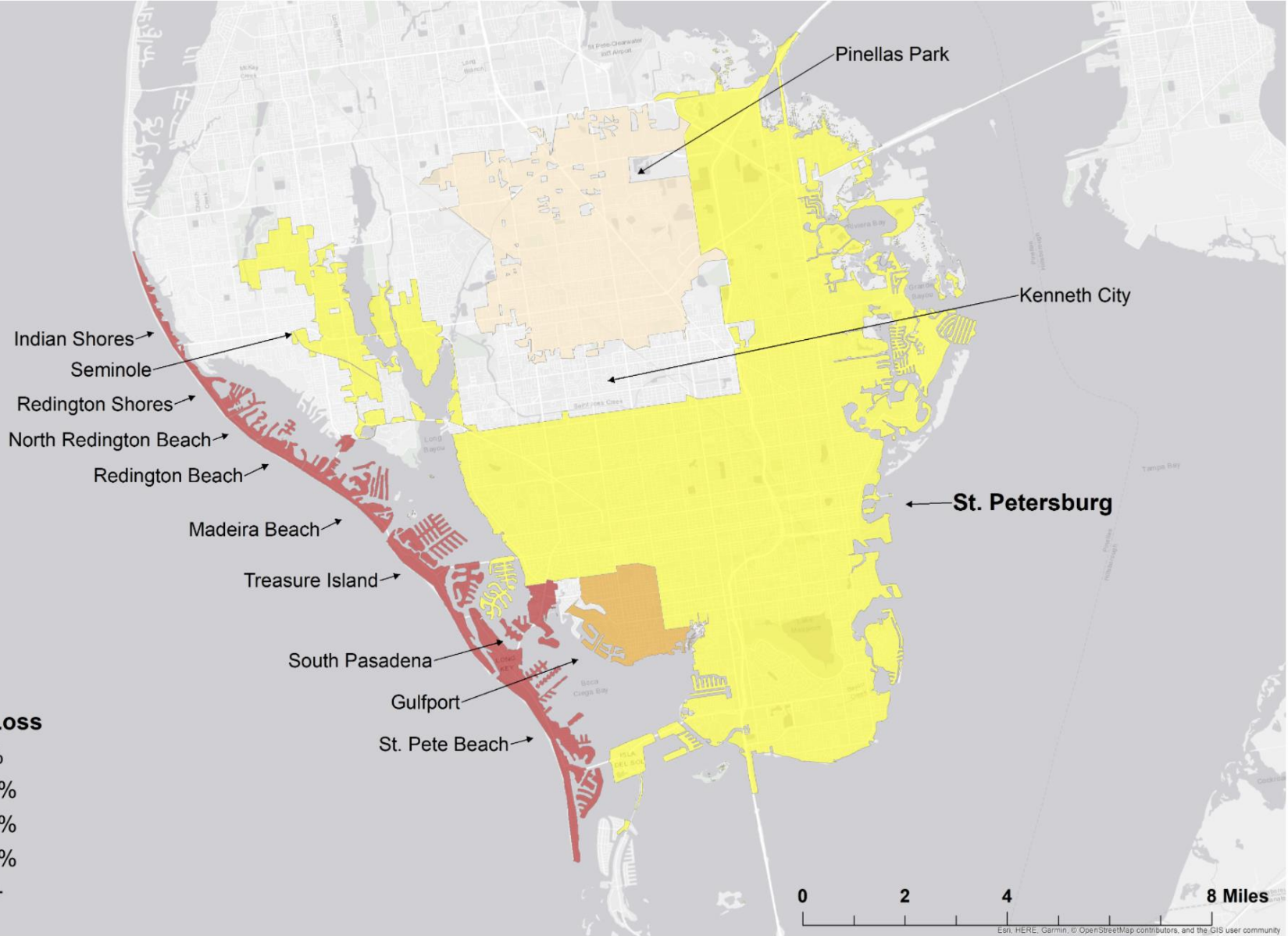
Inundation Level: 2100

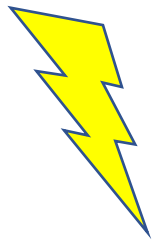
Assessed Value



0 2 4 8 Miles







Fiscal crisis!
Pandemic!



Private & public
sector

We need to limit
liability & ensure
profitability



Federal Government

We need to enable local
response by funding
infrastructure



NGOs, activists, academics, communities:

We need systemic change that attends to
equity, justice, importance of place,
context, make way for mother nature,
sustainable ecosystems