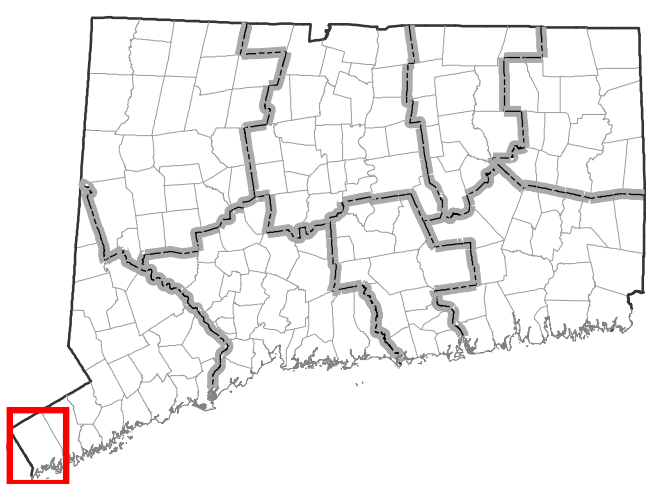
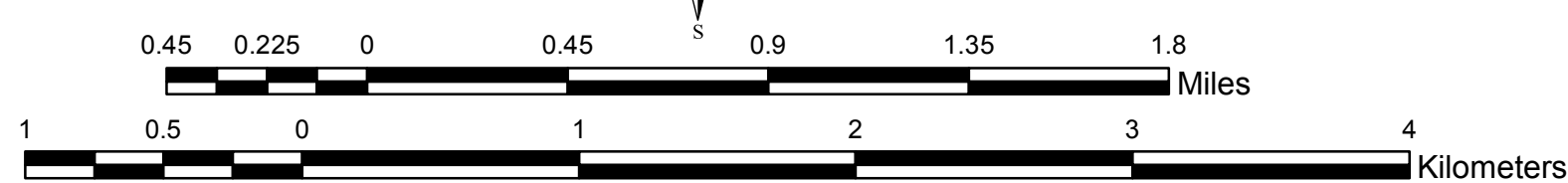
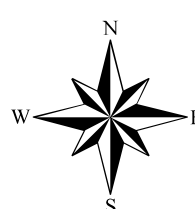


Source: Esri, DigitalGlobe, GeoEye, Earthstar Geographics, CNES/Airbus DS, USDA, USGS, AeroGRID, IGN, SPP, swisstopo, and the GIS User Community, FEMA/MOTF

Greenwich, CT



Potential Severe Storm Surge and Effects of Hurricane Sandy



Infrastructure Sites

- Energy Facilities
- Wastewater Treatment Facilities
- Marine Terminals
- Train Stations

FEMA Individual Assistance (IA) Household Inspection Damage Classification (Hurricane Sandy Impacts)

- Affected – Total Full Verified Loss (FVL) greater than \$0 to \$5,000
- Minor – Total Full Verified Loss (FVL) \$5,000 to \$17,000
- Major – Total Full Verified Loss (FVL) more than \$17,000
- Destroyed - If indicated by IA Inspector

FINAL - High Resolution Storm Surge Extent

- Hurricane Sandy (FEMA Modeling Task Force (MOTF) Impact Analysis)

Projected Hurricane Surge Inundation Areas

- Category 3 Hurricane (Army Corps of Engineers 2012 Surge Model)